

## **Chain Valley Colliery**

### **Quarterly attended noise monitoring - Q3 2024**

---

Prepared for Great Southern Energy Pty Ltd (trading as Delta Coal)

October 2024

# Chain Valley Colliery

## Quarterly attended noise monitoring - Q3 2024

Great Southern Energy Pty Ltd (trading as Delta Coal)

E240010 RP2

October 2024

Version	Date	Prepared by	Reviewed by	Comments
V1	9 October 2024	Teanuanua Villierme	Najah Ishac	Draft
V2	9 October 2024	Teanuanua Villierme	Najah Ishac	Final

Approved by



**Katie Teyhan**

Team Manager – Acoustics

9 October 2024

Level 3 175 Scott Street

Newcastle NSW 2300

ABN: 28 141 736 558

This report has been prepared in accordance with the brief provided by Great Southern Energy Pty Ltd (trading as Delta Coal) and, in its preparation, EMM has relied upon the information collected at the times and under the conditions specified in this report. All findings, conclusions or recommendations contained in this report are based on those aforementioned circumstances. The contents of this report are private and confidential. This report is only for Great Southern Energy Pty Ltd (trading as Delta Coal)'s use in accordance with its agreement with EMM and is not to be relied on by or made available to any other party without EMM's prior written consent. Except as permitted by the Copyright Act 1968 (Cth) and only to the extent incapable of exclusion, any other use (including use or reproduction of this report for resale or other commercial purposes) is prohibited without EMM's prior written consent. Except where expressly agreed to by EMM in writing, and to the extent permitted by law, EMM will have no liability (and assumes no duty of care) to any person in relation to this document, other than to Great Southern Energy Pty Ltd (trading as Delta Coal) (and subject to the terms of EMM's agreement with Great Southern Energy Pty Ltd (trading as Delta Coal)).

© EMM Consulting Pty Ltd, Ground Floor Suite 01, 20 Chandos Street, St Leonards NSW 2065. 2024.

ABN: 28 141 736 558

# TABLE OF CONTENTS

---

<b>1</b>	<b>Introduction</b>	<b>1</b>
1.1	Background	1
1.2	Attended monitoring locations	1
1.3	Terminology and abbreviations	3
<b>2</b>	<b>Noise limits</b>	<b>4</b>
2.1	Development consent	4
2.2	Environment protection licence	4
2.3	Noise management plan	4
2.4	Noise limits	4
2.5	Meteorological conditions	5
2.6	Additional requirements	5
<b>3</b>	<b>Methodology</b>	<b>7</b>
3.1	Overview	7
3.2	Attended noise monitoring	7
3.3	Meteorological data	7
3.4	Modifying factors	8
3.5	Instrumentation and personnel	8
<b>4</b>	<b>Results</b>	<b>9</b>
4.1	Total measured noise levels and atmospheric conditions	9
4.2	Site only noise levels	11
<b>5</b>	<b>Summary</b>	<b>15</b>

## Appendices

Appendix A	Noise perception and examples	A.1
Appendix B	Regulator documents	B.1
Appendix C	Calibration certificates	C.1

## Tables

Table 1.1	Attended noise monitoring locations	1
Table 1.2	Terminology and abbreviations	3
Table 2.1	Noise impact limits, dB	4
Table 2.2	CVC long-term goals	6

Table 3.1	Attended noise monitoring equipment	8
Table 4.1	Total measured noise levels <sup>1</sup> , dB – Quarter 3 2024	9
Table 4.2	Measured atmospheric conditions – Quarter 3 2024	10
Table 4.3	Site noise levels and limits – Quarter 3 2024	12
Table A.1	Perceived change in noise	A.2

## Figures

Figure 1.1	CVC attended noise monitoring locations	2
Figure A.1	Common noise levels	A.2

# 1 Introduction

## 1.1 Background

EMM Consulting Pty Ltd (EMM) was engaged by Great Southern Energy Pty Ltd (trading as Delta Coal) to conduct a quarterly noise survey of operations at Chain Valley Colliery (CVC) located at Vales Road, Mannering Park NSW. The survey purpose was to quantify the acoustic environment and compare site noise levels against specified limits.

Attended environmental noise monitoring described in this report was done during the day, evening and night periods on 11, 20 and 24 September 2024 at nine monitoring locations.

## 1.2 Attended monitoring locations

Attended monitoring locations are detailed in Table 1.1 and shown on Figure 1.1. It should be noted that Figure 1.1 shows actual monitoring locations, not necessarily the location of residences and are based on the approved noise management plan.

**Table 1.1 Attended noise monitoring locations**

Location descriptor	Description	Coordinates (MGA56)	
		Easting	Northing
ATN001	Griffith Street, Mannering Park	363990	6330529
ATN002	Lakeshore Avenue, Kingfisher Shores	365218	6329388
ATN003	Short Street, Macquarie Shores	365165	6328323
ATN004	Lloyd Avenue, Chain Valley Bay	365949	6328530
ATN005	Teragalin Drive, Chain Valley Bay	366560	6328590
ATN006	Sunset Parade, Chain Valley Bay	366305	6329321
ATN007 <sup>1</sup>	Cams Boulevard, Chain Valley Bay	366559	6331109
R12	Lakeshore Avenue, Kingfisher Shores	365185	6329352
R13	Karoola Avenue, Kingfisher Shores	365391	6329169

Notes: 1. Attended noise monitoring was undertaken at the R22 residence (EPL Point 23) instead.





Source: EMM (2024); ABS (2021); DCSSS (2024); GA (2009); MetroMap (2024)

- KEY**
- Ⓐ Noise monitoring location
  - Ⓜ Meteorological station
  - CVC consent boundary
  - Major road
  - Minor road
  - Watercourse/drainage line
  - Waterbody

CVC attended noise monitoring locations

Chain Valley Colliery  
 Quarterly Attended Noise Monitoring  
 Figure 1.1



\emm.local\drive\2024\240010 - Delta coal Noise CY24\8 GIS\02\_Maps\N001\_MonitoringLocations\_N001.aprx 12/04/2024

### 1.3 Terminology and abbreviations

Definitions of terms and abbreviations which may be used in this report are provided in Table 1.2.

**Table 1.2 Terminology and abbreviations**

Term/descriptor	Definition
dB(A)	Noise level measurement units are decibels (dB). The “A” weighting scale is used to approximate how humans hear noise.
L <sub>Amax</sub>	The maximum root mean squared A-weighted noise level over a time period.
L <sub>A1</sub>	The A-weighted noise level which is exceeded for 1% of the time.
L <sub>A1,1minute</sub>	The A-weighted noise level which is exceeded for 1% of the specified time period of 1 minute.
L <sub>A10</sub>	The A-weighted noise level which is exceeded for 10% of the time.
L <sub>Aeq</sub>	The energy average A-weighted noise level.
L <sub>Aeq,15minute</sub>	The energy average A-weighted noise level over the specified time period of 15 minutes.
L <sub>A50</sub>	The A-weighted noise level which is exceeded for 50% of the time, also the median noise level during a measurement period.
L <sub>A90</sub>	The A-weighted noise level exceeded for 90% of the time, also referred to as the “background” noise level and commonly used to derive noise limits.
L <sub>Amin</sub>	The minimum A-weighted noise level over a time period.
L <sub>Ceq</sub>	The energy average C-weighted noise energy during a measurement period. The “C” weighting scale is used to take into account low-frequency components of noise within the audibility range of humans.
SPL	Sound pressure level. Fluctuations in pressure measured as 10 times a logarithmic scale, with the reference pressure being 20 micropascals.
Hertz (Hz)	The frequency of fluctuations in pressure, measured in cycles per second. Most sounds are a combination of many frequencies together.
AWS	Automatic weather station used to collect meteorological data, typically at an altitude of 10 metres
VTG	Vertical temperature gradient in degrees Celsius per 100 metres altitude.
Sigma-theta	The standard deviation of the horizontal wind direction over a period of time.
IA	Inaudible. When site noise is noted as IA then there was no site noise at the monitoring location.
NM	Not measurable. If site noise is noted as NM, this means some noise was audible but could not be quantified.
Day	Monday – Saturday: 7 am to 6 pm, on Sundays and Public Holidays: 8 am to 6 pm.
Evening	Monday – Saturday: 6 pm to 10 pm, on Sundays and Public Holidays: 6 pm to 10 pm.
Night	Monday – Saturday: 10 pm to 7 am, on Sundays and Public Holidays: 10 pm to 8 am.

Appendix A provides further information that gives an indication as to how an average person perceives changes in noise level, and examples of common noise levels.

## 2 Noise limits

### 2.1 Development consent

Noise limits for CVC are provided in Table 1, Condition 7 of Schedule 3 of the current development consent SSD-5465 (DC) dated July 2021. Long-term goals for CVC are provided in Condition 8(d) of Schedule 3 of the DC. Relevant sections of the DC are reproduced in Appendix B.1.

### 2.2 Environment protection licence

Noise limits for CVC are provided in Conditions L5.1 and L5.2 of the current Environment Protection Licence 1770 (EPL) dated 24 October 2023. Relevant sections of the EPL are reproduced in Appendix B.2.

### 2.3 Noise management plan

The approved noise management plan (NMP) (dated 20 April 2022) was prepared in line with the Mod 4 approval and in accordance with the NSW EPA 'Noise Policy for Industry' (NPfI) issued in October 2017. Table 5 of the NMP adopts nine attended noise monitoring (NM) locations that are representative of residences outlined in the DC. Where several assessment locations are in one NM catchment, representative noise limits have been adopted to ensure that the lowest (most stringent) limits within the NM catchment can be achieved. Relevant sections of the NMP are reproduced in Appendix B.3.

### 2.4 Noise limits

Noise impact limits based on the DC and EPL are provided in Table 2.1. Assessment location represented by each noise monitoring location is consistent with the NMP, most of which are listed in the DC and EPL (as shown in brackets alongside where applicable).

**Table 2.1 Noise impact limits, dB**

Noise monitoring location (NMP)	Represented assessment location	Day $L_{Aeq,15minute}$	Evening $L_{Aeq,15minute}$	Night $L_{Aeq,15minute}$	Night $L_{A1,1minute}$
ATN001	R8 (EPL Point 9)	38	38	38	45
ATN002	R11 (EPL Point 12)	49	49	49	54
ATN003	R15 (EPL Point 16)	36	36	36	45
ATN004	R14 <sup>1</sup>	35	35	35	45
ATN005	R17 <sup>1</sup>	35	35	35	45
ATN006	R19 (EPL Point 20)	37	37	37	45
ATN007 <sup>2</sup>	R22 (EPL Point 23)	46	46	46	46
R12	R12 (EPL Point 13)	49	49	49	53
R13	R13 (EPL Point 14)	43	43	43	49

Notes: 1. DC limits for this location are under 'all other privately-owned land'.  
2. Attended noise monitoring was undertaken at the R22 residence (EPL Point 23) instead.



## 2.5 Meteorological conditions

Appendix 8 of the DC states meteorological conditions under which noise limits do not apply as follows:

- during periods of rain or hail
- average wind speed at microphone height exceeds 5 m/s
- wind speeds greater than 3 m/s at 10 m above ground level
- temperature inversion conditions greater than 3°C/100 m.

Condition L5.4 of the EPL states meteorological conditions under which noise limits do not apply as follows:

- wind speeds greater than 3 m/s at 10 m above ground level
- stability category F temperature inversion conditions and wind speeds greater than 2 m/s at 10 m above ground level
- stability category G temperature inversion conditions
- as defined under the NPfl.

The last point referencing the NPfl adds the concept of 'very noise-enhancing' conditions which are considered outside the 'standard' or 'noise-enhancing' meteorological conditions defined in Table D1 of Fact Sheet D of the NPfl.

Further, Fact Sheet E of the NPfl (point 6 of Section E1) provides additional guidance on monitoring the performance of a site against 'suitable' noise limits placed in the DC/EPL. Noise limits are based on 'achievable' noise levels under the 'standard' and/or 'noise-enhancing' meteorological conditions. Where meteorological conditions are considered 'very noise-enhancing', a positive adjustment of 5 dB applies to noise limits for 'standard' or 'noise-enhancing' meteorological conditions.

In accordance with the NPfl, where 'very noise-enhancing' meteorological conditions were present during a noise measurement, a positive adjustment of 5 dB has been applied to the noise limits. This approach means that noise limits are always applicable, with or without a positive adjustment of 5 dB, depending on whether meteorological conditions are 'very noise-enhancing' or not.

## 2.6 Additional requirements

### 2.6.1 Attended noise monitoring

Condition M4.1 of the EPL specifies additional noise monitoring requirements to determine compliance, including the following:

- locations of monitoring – EPL points as listed in Table 2.1 above
- frequency of monitoring – quarterly and at least two months between monitoring periods
- periods of monitoring:
  - For three out of four quarterly periods – each day, evening and night periods for a minimum of 15 minutes. Night period monitoring must be undertaken between the hours of 1 am and 4 am.

- For one out of four quarterly periods – day period monitoring must be undertaken for a minimum of 1.5 hours (six 15-minute periods); evening period monitoring must be undertaken for a minimum of 30 minutes (two 15-minute periods); night period monitoring must be undertaken for a minimum of 1 hour (four 15-minute periods).
- days of monitoring – each quarterly monitoring must be undertaken on a different day of the week excluding Saturday, Sundays and public holidays.

In accordance with the preceding, this round of quarterly attended noise monitoring (Q3 2024) was undertaken on Wednesday 11, Friday 20 and Tuesday 24 September 2024, which is more than two months since the last quarterly monitoring (Q2 2024) which finished on Thursday 13 June 2024. This quarterly period (Q3 2024), monitoring at each monitoring location (as per the EPL) was conducted for a minimum of 15 minutes, with night period monitoring undertaken between the hours of 1 am and 4 am on Friday 20 September 2024. The ‘long’ periods monitoring (e.g. minimum 1.5 hours during day period monitoring) is planned to be completed in Q4 2024.

As per the approved NMP, attended noise monitoring is scheduled considering the occurrence of regular operations at CVC. Noise monitoring avoids scheduled down-time or maintenance. Regular operations were occurring during this round of monitoring (Q3 2024).

Monitoring and reporting have been done in accordance with the NPfl and ‘Approved methods for the measurement and analysis of environmental noise in NSW’ (the approved methods) (EPA 2022).

### 2.6.2 CVC long-term goals

Long-term goals for CVC are provided in Condition 8(d) of Schedule 3 of the DC, which states:

8. The Applicant must:

(d) use its best endeavours to achieve the long-term noise goals in Table 2, where reasonable and feasible, and report on progress towards achieving these goals in each Annual Review;

The long-term goals for CVC in Table 2 of the DC are summarised in Table 2.2 for the relevant assessment locations.

**Table 2.2 CVC long-term goals**

Assessment location	Day $L_{Aeq,15minute}$ , dB	Evening $L_{Aeq,15minute}$ , dB	Night $L_{Aeq,15minute}$ , dB
R11 (EPL Point 12)	41	41	41
R12 (EPL Point 13)	41	41	41
R13 (EPL Point 14)	41	41	41
R22 (EPL Point 23)	40	40	40

As stated in Appendix 9 of the DC, Delta Coal is committed to the progressive implementation of feasible and reasonable measures to target long-term noise goals which are designed to reduce noise emissions from CVC. For this compliance noise monitoring assessment, site  $L_{Aeq,15minute}$  have also been compared to the long-term goals as discussed in Section 4.2.2.

## 3 Methodology

### 3.1 Overview

Attended environmental noise monitoring was done in accordance with Australian Standard AS1055 'Acoustics, Description and Measurement of Environmental Noise' and relevant EPA requirements. Meteorological data was obtained from the Mannering Colliery automatic weather station (AWS) which allowed correlation of atmospheric parameters with measured site noise levels.

### 3.2 Attended noise monitoring

During this Q3 survey, attended noise monitoring was conducted during the day, evening and night periods at each location. Minimum monitoring periods at each location was in accordance with the EPL; 15 minutes during the day, evening and night periods. Atmospheric conditions (at microphone height) were measured at each monitoring location.

Measured sound levels from various sources were noted during each measurement, and particular attention was paid to the extent of site contribution (if any) to measured levels. At each monitoring location, the site-only  $L_{Aeq,15\text{minute}}$  and  $L_{Amax}$  were measured directly or determined by other methods in accordance with Section 7.1 of the NPfl.

The terms 'Inaudible' (IA) or 'Not Measurable' (NM) may be used in this report. When site noise is noted as IA, it was inaudible at the monitoring location. When site noise is noted as NM, this means it was audible but could not be quantified. All results noted as NM in this report were due to one or more of the following:

- Site noise levels were very low, typically more than 10 dB below the measured background ( $L_{A90}$ ), and unlikely to be noticed.
- Site noise levels were masked by more dominant sources that are characteristic of the environment (such as breeze in foliage or continuous road traffic noise) that cannot be eliminated by monitoring at an alternate or intermediate location.
- It was not feasible or reasonable to employ methods, such as to move closer and back calculate. Cases may include rough terrain preventing closer measurement, addition/removal of significant source-to-receiver shielding caused by moving closer, and meteorological conditions where back calculation may not be accurate.

If the exact noise levels from site could not be established due to masking by other noise sources in a similar frequency range but were determined to be at least 5 dB lower than relevant limits, then a maximum estimate may be provided. This is expressed as a 'less than' quantity, such as <20 dB or <30 dB.

For this assessment, the measured  $L_{Amax}$  has been used as a conservative estimate of  $L_{A1,1\text{minute}}$ . The EPA accepts sleep disturbance analysis based on either the  $L_{A1,1\text{minute}}$  or  $L_{Amax}$  metrics, with the  $L_{Amax}$  representing a more conservative assessment of site noise emissions.

### 3.3 Meteorological data

This assessment determined stability categories throughout attended monitoring periods using the sigma-theta method as per Fact Sheet D of the NPfl. This data was sourced from the Mannering Colliery AWS, in accordance with requirements of EPL 1770.

### 3.4 Modifying factors

All measurements were evaluated for potential modifying factors in accordance with the NPfI. Assessment of modifying factors is undertaken at the time of measurement if the site was audible and directly quantifiable. If applicable, modifying factor adjustments have been reported and added to measured site-only  $L_{Aeq}$ .

Low-frequency modifying factor adjustments have only been applied to site-only  $L_{Aeq}$  if the site was the only contributing low-frequency noise source. Specific methodology for assessment of each modifying factor is outlined in Fact Sheet C of the NPfI.

### 3.5 Instrumentation and personnel

Attended noise monitoring was conducted by Acoustical Consultant Teanuanua Villierme. Qualifications, experience and competency are in accordance with the Approved methods and demonstration of this is available upon request.

Equipment used to measure environmental noise levels is detailed in Table 3.1. Calibration certificates are provided in Appendix C.

**Table 3.1 Attended noise monitoring equipment**

Item	Serial number	Calibration due date	Relevant standard
Brüel & Kjær 2250 sound level meter	3029363	3/11/2024	IEC 61672-1:2013
Svantek SV-36 calibrator	79952	27/9/2025	IEC 60942:2017



## 4 Results

### 4.1 Total measured noise levels and atmospheric conditions

Overall noise levels measured at each location during attended measurements are provided in Table 4.1.

**Table 4.1 Total measured noise levels<sup>1</sup>, dB – Quarter 3 2024**

Location	Period	Start date and time	L <sub>Amax</sub>	L <sub>A1</sub>	L <sub>A10</sub>	L <sub>Aeq</sub>	L <sub>A50</sub>	L <sub>A90</sub>	L <sub>Amin</sub>
ATN001	Day	24/09/2024 14:21	77	61	48	51	47	46	44
	Evening	24/09/2024 19:48	74	62	47	51	46	46	44
	Night	20/09/2024 1:18	71	51	45	46	43	42	41
ATN002	Day	24/09/2024 15:05	69	53	43	43	38	37	34
	Evening	11/09/2024 20:54	47	44	42	41	41	40	38
	Night	20/09/2024 2:04	51	49	47	46	46	44	43
ATN003	Day	24/09/2024 14:46	69	57	49	47	42	39	36
	Evening	11/09/2024 21:45	57	40	39	37	37	36	34
	Night	20/09/2024 1:45	50	44	43	42	42	40	39
ATN004	Day	24/09/2024 15:42	71	64	50	51	43	38	34
	Evening	24/09/2024 19:20	74	62	43	48	39	37	34
	Night	11/09/2024 22:39	52	50	45	42	40	37	34
ATN005	Day	24/09/2024 16:09	66	56	50	47	44	40	37
	Evening	24/09/2024 18:53	60	49	46	44	43	40	37
	Night	11/09/2024 23:27	64	52	46	43	41	39	37
ATN006	Day	24/09/2024 16:30	59	46	41	39	37	36	34
	Evening	24/09/2024 18:32	47	41	38	36	35	34	32
	Night	20/09/2024 2:52	45	43	42	40	40	39	37
R22	Day	24/09/2024 17:43	60	47	43	42	41	40	38
	Evening	24/09/2024 18:00	65	52	43	43	41	40	37
	Night	20/09/2024 3:37	48	45	43	42	42	41	39
R12	Day	24/09/2024 15:05	69	53	43	43	38	37	34
	Evening	11/09/2024 20:54	47	44	42	41	41	40	38
	Night	20/09/2024 2:04	51	49	47	46	46	44	43
R13	Day	24/09/2024 15:23	73	63	51	51	43	38	34
	Evening	11/09/2024 21:12	53	45	41	40	40	39	36
	Night	20/09/2024 2:22	57	52	47	46	45	44	42

Notes: 1. Levels in this table are not necessarily the result of activity at site.

Atmospheric condition data measured by the operator during each measurement using a hand-held weather meter is shown in Table 4.2. The wind speed, direction and temperature were measured at approximately 1.5 m above ground. Attended noise monitoring is not done during rain, hail, or average wind speeds above 5 m/s at microphone height.

**Table 4.2 Measured atmospheric conditions – Quarter 3 2024**

Location	Period	Start date and time	Temperature °C	Wind speed m/s	Wind direction ° Magnetic north <sup>1</sup>	Cloud cover 1/8s
ATN001	Day	24/09/2024 14:21	23	<0.5	-	8
	Evening	24/09/2024 19:48	20	<0.5	-	8
	Night	20/09/2024 1:18	16	<0.5	-	0
ATN002	Day	24/09/2024 15:05	23	<0.5	-	8
	Evening	11/09/2024 20:54	19	<0.5	-	8
	Night	20/09/2024 2:04	15	<0.5	-	0
ATN003	Day	24/09/2024 14:46	23	<0.5	-	8
	Evening	11/09/2024 21:45	17	<0.5	-	8
	Night	20/09/2024 1:45	15	<0.5	-	0
ATN004	Day	24/09/2024 15:42	21	<0.5	-	8
	Evening	24/09/2024 19:20	20	<0.5	-	8
	Night	11/09/2024 22:39	18	<0.5	-	8
ATN005	Day	24/09/2024 16:09	23	<0.5	-	8
	Evening	24/09/2024 18:53	19	<0.5	-	8
	Night	11/09/2024 23:27	19	<0.5	-	8
ATN006	Day	24/09/2024 16:30	22	<0.5	-	8
	Evening	24/09/2024 18:32	20	1.0	15	8
	Night	20/09/2024 2:52	15	<0.5	-	0
R22	Day	24/09/2024 17:43	19	<0.5	-	8
	Evening	24/09/2024 18:00	19	<0.5	-	8
	Night	20/09/2024 3:37	15	<0.5	-	0
R12	Day	24/09/2024 15:05	23	<0.5	-	8
	Evening	11/09/2024 20:54	19	<0.5	-	8
	Night	20/09/2024 2:04	15	<0.5	-	0
R13	Day	24/09/2024 15:23	22	<0.5	-	8
	Evening	11/09/2024 21:12	19	<0.5	-	7
	Night	20/09/2024 2:22	15	<0.5	-	0

Notes: 1. “-” indicates calm conditions at monitoring location.

## 4.2 Site only noise levels

### 4.2.1 Monitoring results

Table 4.3 provides site noise levels in the absence of other sources, where possible, and includes weather data from the Mannering Colliery AWS. Noise limits are applicable under all weather conditions but are adjusted during very noise-enhancing weather conditions, where relevant, as defined in the NPfI.

**Table 4.3 Site noise levels and limits – Quarter 3 2024**

Location	Start date and time	Period	Wind		Stability class	Very noise-enhancing? <sup>1</sup>	Limits, dB		Site levels, dB		Exceedances, dB	
			Speed m/s	Direction <sup>3</sup>			L <sub>Aeq,15minute</sub>	L <sub>Amax</sub>	L <sub>Aeq,15minute</sub> <sup>2</sup>	L <sub>Amax</sub>	L <sub>Aeq,15minute</sub>	L <sub>Amax</sub>
ATN001	24/09/2024 14:21	Day	1.1	46	A	N	38	N/A	IA	N/A	Nil	N/A
	24/09/2024 19:48	Evening	2.1	357	F	Y	43 (38+5) <sup>1</sup>	N/A	IA	N/A	Nil	N/A
	20/09/2024 1:18	Night	0.5	135	F	N	38	45	IA	IA	Nil	Nil
ATN002	24/09/2024 15:05	Day	1.5	49	A	N	49	N/A	IA	N/A	Nil	N/A
	11/09/2024 20:54	Evening	0.3	61	F	N	49	N/A	IA	N/A	Nil	N/A
	20/09/2024 2:04	Night	0.8	328	F	N	49	54	IA	IA	Nil	Nil
ATN003	24/09/2024 14:46	Day	1.5	49	B	N	36	N/A	IA	N/A	Nil	N/A
	11/09/2024 21:45	Evening	0.7	46	F	N	36	N/A	IA	N/A	Nil	N/A
	20/09/2024 1:45	Night	0.4	350	F	N	36	45	IA	IA	Nil	Nil
ATN004	24/09/2024 15:42	Day	1.2	50	A	N	35	N/A	IA	N/A	Nil	N/A
	24/09/2024 19:20	Evening	1.4	24	F	N	35	N/A	IA	N/A	Nil	N/A
	11/09/2024 22:39	Night	0.7	22	F	N	35	45	IA	IA	Nil	Nil
ATN005	24/09/2024 16:09	Day	1.3	44	A	N	35	N/A	IA	N/A	Nil	N/A
	24/09/2024 18:53	Evening	1.3	32	F	N	35	N/A	IA	N/A	Nil	N/A
	11/09/2024 23:27	Night	0.9	296	F	N	35	45	IA	IA	Nil	Nil
ATN006	24/09/2024 16:30	Day	1.4	52	A	N	37	N/A	IA	N/A	Nil	N/A
	24/09/2024 18:32	Evening	1.6	37	F	N	37	N/A	IA	N/A	Nil	N/A
	20/09/2024 2:52	Night	0.6	172	F	N	37	45	IA	IA	Nil	Nil



Location	Start date and time	Period	Wind		Stability class	Very noise-enhancing? <sup>1</sup>	Limits, dB		Site levels, dB		Exceedances, dB	
			Speed m/s	Direction <sup>3</sup>			L <sub>Aeq,15minute</sub>	L <sub>Amax</sub>	L <sub>Aeq,15minute</sub> <sup>2</sup>	L <sub>Amax</sub>	L <sub>Aeq,15minute</sub>	L <sub>Amax</sub>
R22	24/09/2024 17:43	Day	1.8	46	F	N	46	N/A	40	N/A	Nil	N/A
	24/09/2024 18:00	Evening	1.7	45	F	N	46	N/A	41 (39+2) <sup>4</sup>	N/A	Nil	N/A
	20/09/2024 3:37	Night	1.9	265	F	N	46	46	41 (39+2) <sup>4</sup>	40 <sup>5</sup>	Nil	Nil
R12	24/09/2024 15:05	Day	1.5	49	A	N	49	N/A	IA	N/A	Nil	N/A
	11/09/2024 20:54	Evening	0.3	61	F	N	49	N/A	IA	N/A	Nil	N/A
	20/09/2024 2:04	Night	0.8	328	F	N	49	53	IA	IA	Nil	Nil
R13	24/09/2024 15:23	Day	1.2	52	A	N	43	N/A	IA	N/A	Nil	N/A
	11/09/2024 21:12	Evening	0.3	170	F	N	43	N/A	IA	N/A	Nil	N/A
	20/09/2024 2:22	Night	1.3	309	F	N	43	49	IA	IA	Nil	Nil

- Notes:
1. Noise limits are adjusted by +5 dB during 'very noise-enhancing meteorological conditions' in accordance with the NPfl.
  2. Site-only L<sub>Aeq,15minute</sub>, includes modifying factor adjustments if applicable.
  3. Degrees magnetic north, "-" indicates calm conditions.
  4. A positive adjustment for LFN was applicable.
  5. Modifying factor adjustments do not apply to site L<sub>Amax</sub>.

## 4.2.2 Long term noise goals

Site  $L_{Aeq,15minute}$  were also compared to the long-term noise goals (refer to Table 2.2) for the relevant locations (i.e. R11, R12, R13 and R22). Site  $L_{Aeq,15minute}$  measured at ATN002 (R11), R12 and R13 satisfied the relevant long-term goals during the day, evening and night periods. At R22, the measured site  $L_{Aeq,15minute}$  (inclusive of modifying factor adjustment for LFN) exceeded the relevant long-term  $L_{Aeq,15minute}$  40 dB goal by 1 dB during the evening and night measurements, and otherwise satisfied the daytime long-term goal.

## 5 Summary

EMM was engaged by Great Southern Energy Pty Ltd (trading as Delta Coal) to conduct a quarterly noise survey of operations at CVC. The survey purpose was to quantify the acoustic environment and compare site noise levels against specified noise limits.

Attended environmental noise monitoring described in this report was done during the day, evening and night periods on 11, 20 and 24 September 2024 at nine monitoring locations.

Noise levels from site complied with relevant limits at all monitoring locations during the Q3 2024 survey.

CVC  $L_{Aeq,15minute}$  were also compared to the long-term noise goals applicable at R11 (ATN002), R12, R13 and R22 (ATN007). CVC  $L_{Aeq,15minute}$  satisfied these during all measurements at all these locations except at R22. At R22, the measured site  $L_{Aeq,15minute}$  (inclusive of modifying factor adjustment for LFN) exceeded the long-term  $L_{Aeq,15minute}$  40 dB goal by 1 dB during the evening and night measurements.

---

# Appendix A

Noise perception and examples

---

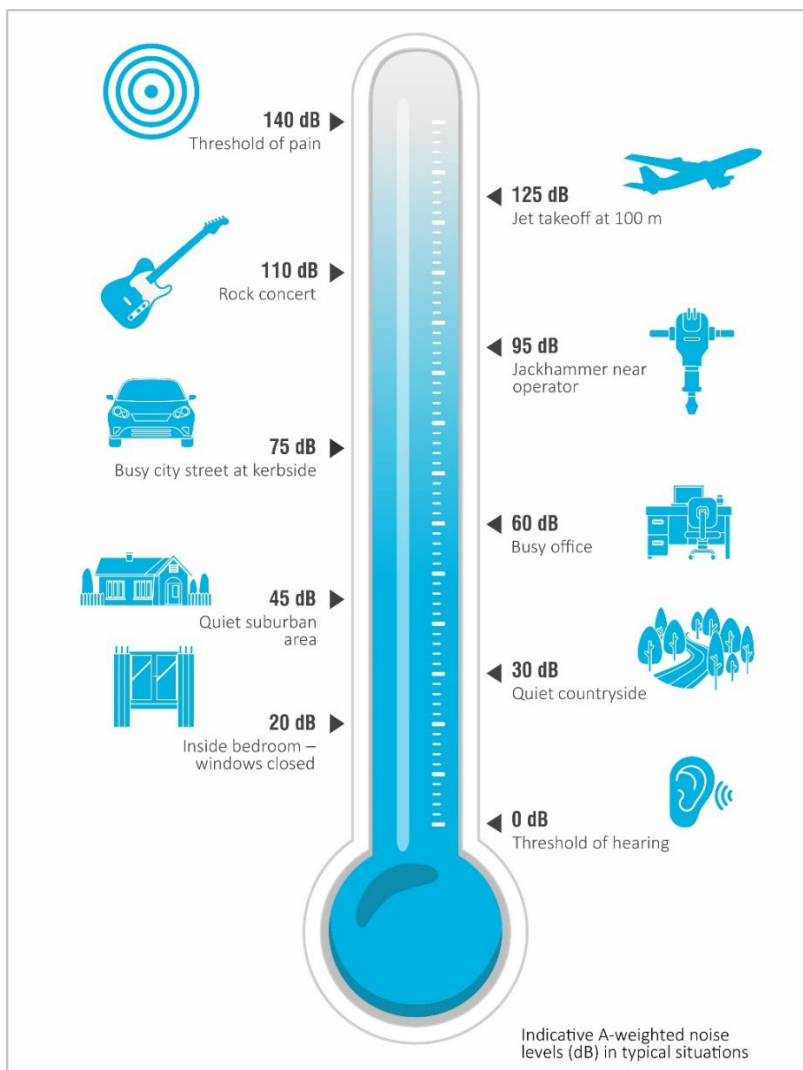


## A.1 Noise levels

Table A.1 gives an indication as to how an average person perceives changes in noise level. Examples of common noise levels are provided in Figure A.1.

**Table A.1 Perceived change in noise**

Change in sound pressure level (dB)	Perceived change in noise
Up to 2	Not perceptible
3	Just perceptible
5	Noticeable difference
10	Twice (or half) as loud
15	Large change
20	Four times (or quarter) as loud



**Figure A.1 Common noise levels**

---

# Appendix B

Regulator documents

---

## B.1 Development consent

4. Prior to 31 March 2014, and every 12 months thereafter for each calendar year in which coal haulage from the site is undertaken utilising public roads, unless the Planning Secretary directs otherwise, the Applicant must commission a suitably qualified person, whose appointment has been approved by the Planning Secretary at least one month prior to undertaking the audit, to conduct an Independent Traffic Audit of the development. This audit must:
  - (a) be undertaken without prior notice to the Applicant, and in consultation with TfNSW, NCC, CC Council and the CCC;
  - (b) assess the impact of the development on the performance and safety of the road network, including a review of:
    - haulage records;
    - accident records on the haulage route, infringements relating to the code of conduct and any incidents involving haulage vehicles;
    - community complaints register; and
  - (c) assess the effectiveness of the Road Transport Protocol; and, if necessary, recommend measures to reduce or mitigate any adverse (or potentially adverse) impacts.
5. Within 1 month of receiving the audit report, or as otherwise agreed by the Planning Secretary, the Applicant must submit a copy of the report to the Planning Secretary, with a detailed response to any of the recommendations contained in the audit report, including a timetable for the implementation of any measures proposed to address the recommendations in the audit report.

A summary of the audit report must be included in the Annual Review.

### Alternative Coal Transport Options

6. Prior to 31 December 2014, and every three years thereafter, the Applicant must prepare and submit to the Planning Secretary for approval, a study of the reasonable and feasible options to reduce or eliminate the use of public roads to transport coal from the development, unless otherwise agreed by the Planning Secretary. The assessment must include:
  - (a) an analysis of the capital, construction and operating costs of the alternative transport options; and
  - (b) quantified social and environmental impacts associated with road and rail transport.

### NOISE

#### Noise Impact Assessment Criteria

7. The Applicant must ensure that the noise generated by the development at any residence on privately-owned land does not exceed the criteria for the location in Table 1 nearest to that residence.

Table 1: Noise Criteria dB(A)

Location	Day	Evening	Night	
	L <sub>Aeq</sub> (15 min)	L <sub>Aeq</sub> (15 min)	L <sub>Aeq</sub> (15 min)	L <sub>A1</sub> (1 min)
R8	38	38	38	45
R11	49	49	49	54
R12	49	49	49	53
R13	43	43	43	49
R15	36	36	36	45
R19	37	37	37	45
R22	46	46	46	46
all other privately-owned land	35	35	35	45

Notes:

- To interpret the locations referred to in Table 1, see Appendix 6 and the EIS; and
- Noise generated by the development is to be measured in accordance with the relevant requirements, and exemptions (including certain meteorological conditions), of the NSW Industrial Noise Policy. Appendix 8 sets out the meteorological conditions under which these criteria apply, and the requirements for evaluating compliance with these criteria.

However, these criteria do not apply if the Applicant has a written agreement with the relevant landowner to exceed the noise criteria, and the Applicant has advised the Department in writing of the terms of this agreement.

## Operating Conditions

8. The Applicant **must**:
- implement best management practice, including all reasonable and feasible noise mitigation measures, to minimise the construction, operational and transport noise generated by the development;
  - regularly assess the noise monitoring and meteorological data and relocate, modify, and/or stop operations on site to ensure compliance with the relevant conditions of this consent;
  - minimise the noise impacts of the development during meteorological conditions under which the noise limits in this consent do not apply (see Appendix 8);
  - use its best endeavours to achieve the long-term noise goals in Table 2, where reasonable and feasible, and report on progress towards achieving these goals in each Annual Review;
  - carry out a comprehensive noise audit of the development in conjunction with each independent environmental audit; and
  - prepare an action plan to implement any additional reasonable and feasible onsite noise mitigation measures identified by each audit;
- to the satisfaction of the **Planning Secretary**.

Table 2: Long-term Noise Goals dB(A)

Location	Day	Evening	Night
	<i>L<sub>Aeq(15 min)</sub></i>	<i>L<sub>Aeq(15 min)</sub></i>	<i>L<sub>Aeq(15 min)</sub></i>
R11 – R13	41	41	41
R22	40	40	40

Notes:

- To interpret the locations referred to in Table 2, see Appendix 6 and the EIS; and
- Noise generated by the development is to be measured in accordance with the relevant requirements, and exemptions (including certain meteorological conditions), of the NSW Industrial Noise Policy. Appendix 8 sets out the meteorological conditions under which these criteria apply, and the requirements for evaluating compliance with these criteria.

## Noise Management Plan

9. The Applicant **must** prepare a Noise Management Plan for the development to the satisfaction of the **Planning Secretary**. This plan must:
- be prepared in consultation with the EPA and submitted to the **Planning Secretary** for approval within 4 months of the date of this consent, unless otherwise agreed by the **Planning Secretary**;
  - describe the measures that would be implemented to ensure compliance with the noise criteria and operating conditions in this consent;
  - describe the proposed noise management system in detail including the mitigation measures that would be implemented to minimise noise during construction and operations, including on and off site road noise generated by vehicles associated with the development; and
  - include a monitoring program that:
    - uses attended monitoring to evaluate the compliance of the development against the noise criteria in this consent;
    - evaluates and reports on:
      - the effectiveness of the on-site noise management system; and
      - compliance against the noise operating conditions; and
    - defines what constitutes a noise incident, and includes a protocol for identifying and notifying the Department and relevant stakeholders of any noise incidents.

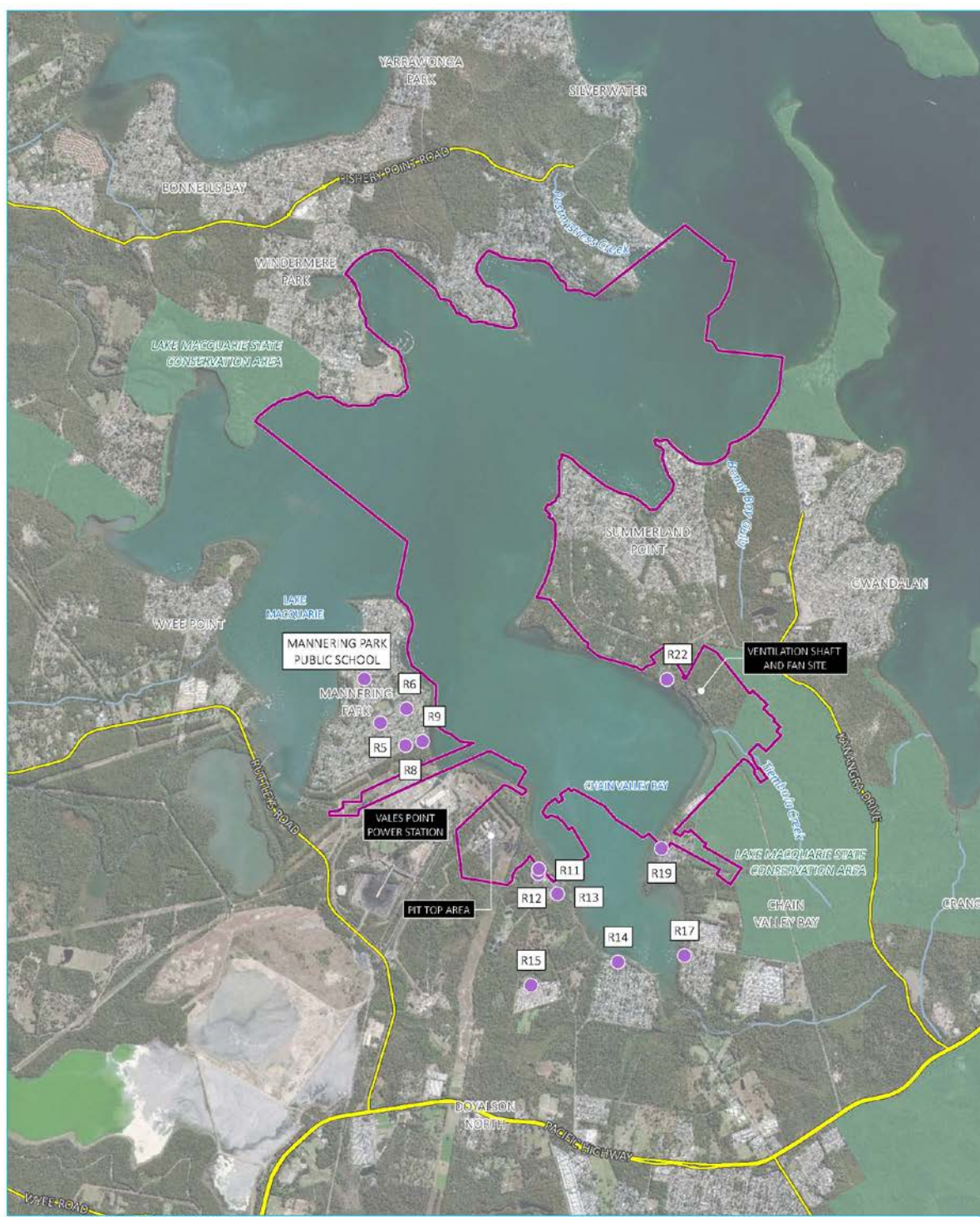
The Applicant **must** implement the Noise Management Plan as approved by the **Planning Secretary**.

## AIR QUALITY

### Odour

10. The Applicant **must** ensure that no offensive odours are emitted from the site, as defined under the POEO Act.

## APPENDIX 6 NOISE RECEIVER LOCATIONS



Source: EMM (2019), CVC (2019), DFSI (2017), GA (2011)



- KEY**
- Assessment location
  - ▭ Chain Valley Colliery development consent boundary
  - Main road
  - Watercourse/crainage line
  - NPWS reserve

Assessment locations

Chain Valley Colliery  
Modification 3



**Figure 1: Noise Receiver Locations**

T:\Jobs\2018\180564 - LareeCoal Approvals\GIS\02\_Maps\DPPE\_SubsistenceManagement\PM05\_AssessmentLocations\_200200504\_01.mxd 4/05/2020

## APPENDIX 8 NOISE COMPLIANCE ASSESSMENT

### Applicable Meteorological Conditions

1. The noise criteria in Table 1 of the conditions are to apply under all meteorological conditions except the following:
  - (a) during periods of rain or hail;
  - (b) average wind speed at microphone height exceeds 5 m/s;
  - (c) wind speeds greater than 3 m/s measured at 10 m above ground level; or
  - (d) temperature inversion conditions greater than 3°C/100 m.

### Determination of Meteorological Conditions

2. Except for wind speed at microphone height, the data to be used for determining meteorological conditions **must** be that recorded by the meteorological station described in **condition 14** of schedule 3.

### Compliance Monitoring

3. Attended monitoring is to be used to evaluate compliance with the relevant conditions of this consent.
4. This monitoring must be carried out at least 4 times in each calendar year (ie at least once every 3 months), unless the **Planning Secretary** directs otherwise.
5. Unless otherwise agreed with the **Planning Secretary**, this monitoring is to be carried out in accordance with the relevant requirements for reviewing performance set out in the *NSW Industrial Noise Policy* (as amended from time to time), in particular the requirements relating to:
  - (a) monitoring locations for the collection of representative noise data;
  - (b) meteorological conditions during which collection of noise data is not appropriate;
  - (c) equipment used to collect noise data, and conformity with Australian Standards relevant to such equipment; and
  - (d) modifications to noise data collected, including for the exclusion of extraneous noise and/or penalties for modifying factors apart from adjustments for duration.



	<p>results of this monitoring program will be reviewed by a suitably qualified expert and used to determine the appropriateness of the existing irrigation area to receive this effluent;</p> <ul style="list-style-type: none"> <li>develop a program to monitor creek line channel stability and the health of riparian vegetation within Swindles Creek. Monitoring will be undertaken in accordance with Section 8.5.2 of the Surface Water Impact Assessment (EIS Appendix E) and incorporated into the Colliery's WMP or Biodiversity Management Plan; and</li> <li>record monitoring data in accordance with the Colliery's WMP and EPL 1770. Monitoring data will be interpreted as it is received to ensure appropriate operational guidance on monitoring water quality within desired <a href="#">parameters</a>. Results of water quality monitoring will be reported in the Annual Review and made available to the CCC, as well as <a href="#">CC Council and LMCC</a>.</li> </ul>
<b>Noise</b>	<p>Management and monitoring of noise will continue to be undertaken in accordance with the Colliery's NMP, which will be reviewed and updated as required to include the commitments made below. <a href="#">Great Southern Energy Pty Limited</a> will:</p> <ul style="list-style-type: none"> <li>continue attended compliance monitoring on site which will be used to identify potential hot spots and primary noise sources;</li> <li>continue real-time noise monitoring alerts to site personnel to enable implementation of any required rapid noise management initiatives;</li> <li>manage potential non-compliance through a noise complaint handling and response system, including the identification of responsible sources to enable targeted remedial action;</li> <li>assess if further noise mitigation options for the ventilation fans are reasonable and feasible following the receipt of attenuation proposals; and</li> <li>discuss potential management measures or agreement options with the landowner at 275 Cams Boulevard, following receipt of proposals from acoustics specialists.</li> </ul> <p>In addition to the above, <a href="#">Great Southern Energy Pty Limited</a> is committed to the progressive implementation of feasible measures to target long-term noise goals which are designed to reduce noise emissions from the Colliery. Long-term options for investigation include:</p> <ul style="list-style-type: none"> <li>modification to belt/movement alarms;</li> <li>investigation of surface conveyer and coal preparation equipment, to determine if noise reductions are possible;</li> <li>identifying sound attenuation options for the surface bulldozer and front-end loader;</li> <li>strategic placement of acoustic barriers;</li> <li>attenuation for the surface screener/shaker;</li> <li>installation of quiet rollers for surface conveyer belts;</li> <li>acoustic treatments around compressors; and</li> <li>the use of a conveyor stacker for product coal stockpiling.</li> </ul>
<b>Air Quality and greenhouse gases</b>	<p>Management and monitoring of air quality and greenhouse gases will continue to be undertaken in accordance with the Colliery's <a href="#">AQGHGMP</a>, which will be reviewed and updated as required to include the commitments made below <a href="#">Great Southern Energy Pty Limited</a> will:</p> <ul style="list-style-type: none"> <li>investigate the use of a stacker to replace hauling between current conveyer system and stockpiles;</li> <li>undertake GHG monitoring comprising measurement of carbon dioxide and methane at the ventilation shaft and fan sites; and</li> <li>record and report annual diesel, oil, grease, acetylene and electricity use to fulfil National Greenhouse and Energy Reporting Scheme requirements.</li> </ul>
<b>Traffic and transport</b>	<p>Management and monitoring of traffic and transport will continue to be undertaken in accordance with the Colliery's RTP. In addition, <a href="#">Great Southern Energy Pty Limited</a> will continue to investigate alternative options for transporting export coal to the <a href="#">Port of Newcastle</a>, specifically the preferred rail transport option, requiring the construction of a private haul road to the VPPS coal unloading facility and associated infrastructure upgrades. In addition, <a href="#">Great Southern Energy Pty Limited</a> will investigate options to reduce peak hour traffic would be investigated including potentially limiting the peak hourly volumes of the Colliery truck traffic which would be permitted to travel via this intersection should the Colliery not be using rail transport for export coal by five years from the granting of development consent. Alternatively, a pro-rata financial contribution to the cost of installing traffic signals at the southbound intersection of the F3 and Sparks Road interchange could be made commensurate with the percentage of Colliery generated traffic using the intersection.</p>
<b>Subsidence</b>	<p>Management and monitoring of subsidence will continue to be undertaken in accordance with the Colliery's <a href="#">SMP or Extraction Plans</a>, which will be reviewed and</p>



## B.2 Environment Protection Licence

# Environment Protection Licence

Licence - 1770

1	Discharge to waters Discharge quality and volume monitoring	Discharge to waters Discharge quality and volume monitoring	Discharge to waters and monitoring from final settlement pond, gravity fed discharge pipe as identified in plan titled "Delta Coal Chain Valley Colliery, Surface EPA Premises Plan, DRG No: C1S0165_2" 10 August 2021 and saved as EPA Document DOC21/691135.
27	Discharge to waters Discharge quality and volume monitoring	Discharge to waters Discharge quality and volume monitoring	Discharge to waters via dam spillway from final settlement pond adjacent to EPA Point 1 as identified in plan titled "Delta Coal Chain Valley Colliery, Surface EPA Premises Plan, DRG No: C1S0165_2" 10 August 2021 and saved as EPA Document DOC21/691135.

P1.4 The following points referred to in the table below are identified in this licence for the purposes of weather and/or noise monitoring and/or setting limits for the emission of noise from the premises.

### *Noise/Weather*

EPA identification no.	Type of monitoring point	Location description
9	Noise monitoring	Noise monitoring site R8 as defined in Development Consent SSD-5465 (MOD 3), located at 109 Griffith Street, MANNERING PARK, 2259
12	Noise monitoring	Noise monitoring site R11 as defined in Development Consent SSD-5465 (MOD 3), located at 35 Lakeshore Avenue, CHAIN VALLEY BAY, 2259
13	Noise monitoring	Noise monitoring site R12 as defined in Development Consent SSD-5465 (MOD 3), located at 20 Lakeshore Avenue, Kingfisher Shores, CHAIN VALLEY BAY, 2259
14	Noise monitoring	Noise monitoring site R13 as defined in Development Consent SSD-5465 (MOD 3), located at 33 Karoola Avenue, Kingfisher Shores, CHAIN VALLEY BAY, 2259
16	Noise monitoring	Noise monitoring site R15 as defined in Development Consent SSD-5465 (MOD 3), located at Short Street, Macquarie Shores, CHAIN VALLEY BAY, 2259
20	Noise monitoring	Noise monitoring site R19 as defined in Development Consent SSD-5465 (MOD 3), located at 2 Sunset Parade, CHAIN VALLEY BAY, 2259

# Environment Protection Licence

Licence - 1770

23	Noise monitoring	Noise monitoring site R22 as defined in Development Consent SSD-5465 (MOD 3), located at 275a Cams Boulevard, CHAIN VALLEY BAY, 2259
26	Meteorological Station	Manning Colliery Meteorological Station, Ruttleys Road, Doyalson 2259.

## 3 Limit Conditions

### L1 Pollution of waters

L1.1 Except as may be expressly provided in any other condition of this licence, the licensee must comply with section 120 of the Protection of the Environment Operations Act 1997.

### L2 Concentration limits

L2.1 For each monitoring/discharge point or utilisation area specified in the table/s below (by a point number), the concentration of a pollutant discharged at that point, or applied to that area, must not exceed the concentration limits specified for that pollutant in the table.

L2.2 Where a pH quality limit is specified in the table, the specified percentage of samples must be within the specified ranges.

L2.3 To avoid any doubt, this condition does not authorise the pollution of waters by any pollutant other than those specified in the table/s.

L2.4 Water and/or Land Concentration Limits

#### POINT 1,27

Pollutant	Units of Measure	50 percentile concentration limit	90 percentile concentration limit	3DGM concentration limit	100 percentile concentration limit
Faecal Coliforms	colony forming units per 100 millilitres				200
pH	pH				6.5-8.5
Total suspended solids	milligrams per litre				50

# Environment Protection Licence

Licence - 1770

## L3 Volume and mass limits

- L3.1 For each discharge point or utilisation area specified below (by a point number), the volume/mass of:
- liquids discharged to water; or
  - solids or liquids applied to the area;
- must not exceed the volume/mass limit specified for that discharge point or area.

Point	Unit of Measure	Volume/Mass Limit
1	kilolitres per day	12161
27	kilolitres per day	12161

- L3.2 The volumetric daily discharge limit for the premises is the combined discharge measured at EPA discharge points 1 and 27 and must not exceed 12161 kilolitres per day.

## L4 Waste

- L4.1 The licensee must not cause, permit or allow any waste to be received at the premises, except the wastes expressly referred to in the column titled "Waste" and meeting the definition, if any, in the column titled "Description" in the table below.

Any waste received at the premises must only be used for the activities referred to in relation to that waste in the column titled "Activity" in the table below.

Any waste received at the premises is subject to those limits or conditions, if any, referred to in relation to that waste contained in the column titled "Other Limits" in the table below.

This condition does not limit any other conditions in this licence.

Code	Waste	Description	Activity	Other Limits
NA	General or Specific exempted waste	Waste that meets all the conditions of a resource exemption under Clause 92 of the Protection of the Environment Operations (Waste) Regulation 2014.	As specified in each particular resource recovery exemption	NA

## L5 Noise limits

- L5.1 Noise generated at the premises that is measured at each noise monitoring point established under this licence must not exceed the noise levels specified in Column 4 of the table below for that point during the corresponding time periods specified in Column 1 when measured using the corresponding measurement parameters listed in Column 2.

### POINT 12

Time period	Measurement parameter	Measurement frequency	Noise level dB(A)
-------------	-----------------------	-----------------------	-------------------

# Environment Protection Licence

Licence - 1770

Day	Day-LAeq (15 minute)	-	49
Evening	Evening-LAeq (15 minute)	-	49
Night	Night-LAeq (15 minute)	-	49
Night	Night-LA1 (1 minute)	-	54

## POINT 13

Time period	Measurement parameter	Measurement frequency	Noise level dB(A)
Day	Day-LAeq (15 minute)	-	49
Evening	Evening-LAeq (15 minute)	-	49
Night	Night-LAeq (15 minute)	-	49
Night	Night-LA1 (1 minute)	-	53

## POINT 14

Time period	Measurement parameter	Measurement frequency	Noise level dB(A)
Day	Day-LAeq (15 minute)	-	43
Evening	Evening-LAeq (15 minute)	-	43
Night	Night-LAeq (15 minute)	-	43
Night	Night-LA1 (1 minute)	-	49

## POINT 16

Time period	Measurement parameter	Measurement frequency	Noise level dB(A)
Day	Day-LAeq (15 minute)	-	36
Evening	Evening-LAeq (15 minute)	-	36
Night	Night-LAeq (15 minute)	-	36
Night	Night-LA1 (1 minute)	-	45

## POINT 20

Time period	Measurement parameter	Measurement frequency	Noise level dB(A)
Day	Day-LAeq (15 minute)	-	37
Evening	Evening-LAeq (15 minute)	-	37
Night	Night-LAeq (15 minute)	-	37

# Environment Protection Licence

Licence - 1770

Night	Night-LA1 (1 minute)	-	45
-------	----------------------	---	----

## POINT 23

Time period	Measurement parameter	Measurement frequency	Noise level dB(A)
Day	Day-LAeq (15 minute)	-	46
Evening	Evening-LAeq (15 minute)	-	46
Night	Night-LAeq (15 minute)	-	46
Night	Night-LA1 (1 minute)	-	46

## POINT 9

Time period	Measurement parameter	Measurement frequency	Noise level dB(A)
Day	Day-LAeq (15 minute)	-	38
Evening	Evening-LAeq (15 minute)	-	38
Night	Night-LAeq (15 minute)	-	38
Night	Night-LA1 (1 minute)	-	45

L5.2 The licensee must ensure that noise generated on the premises does not exceed:

- 35 LAeq(15min) during the day, evening or night at any privately owned land nearest to the residence apart from those receivers identified in Condition 5.1; and
- 45 LA1(1min) during the night at any privately owned land nearest to the residence apart from those receivers identified in Condition 5.1.

Note: The licensee may provide to the EPA written evidence of any agreement with a landholder which is subject to the above noise limits. The written evidence may be submitted with a licence variation to remove the landholder from the above tables.

L5.3 For the purpose of condition L5.1 and condition L5.2:

- Day is defined as the period from 7am to 6pm Monday to Saturday and 8am to 6pm Sunday and public holidays;
- Evening is defined as the period 6pm to 10pm, and
- Night is defined as the period from 10pm to 7am Monday to Saturday and 10pm to 8am Sunday and public holidays.

L5.4 The noise limits set out in condition L5.1 and condition L5.2 apply under all meteorological conditions except for any one of the following:

# Environment Protection Licence

Licence - 1770

- (a) Wind speeds greater than 3 metres/second at 10 metres above ground level; or
- (b) Stability category F temperature inversion conditions and wind speeds greater than 2 metres/second at 10 metres above ground level; or
- (c) Stability category G temperature inversion conditions.
- (d) Or as defined under the NSW EPA Noise Policy for Industry 2017.

L5.5 For the purpose of condition L5.4:

- (a) the meteorological data to be used for determining meteorological conditions is the data recorded at the meteorological station identified in this licence as EPA Identification Point 26.
- (b) Stability category temperature inversion conditions are to be determined in accordance with the NSW EPA Noise Policy for Industry 2017.

Note: The weather station must be designed, commissioned and operated in a manner to obtain the necessary parameters required under the above condition.

L5.6 For the purpose of determining the noise generated at the premises the licensee must use a Class 1 or Class 2 noise monitoring device as defined by AS IEC61672.1 and AS IEC61672.2-2004, or other noise monitoring equipment accepted by the EPA in writing.

L5.7 To determine compliance:

1. With the  $L_{Aeq(15\text{ min})}$  noise limits in condition L5.1 and condition L5.2, the licensee must locate noise monitoring equipment;

(a) within 30 metres of a dwelling facade (but not closer than 3 metres) where any dwelling on the property is situated more than 30 metres from the property boundary that is closest to the premises;

(b) approximately on the boundary where any dwelling is situated 30 metres or less from the property boundary that is closest to the premises, or, where applicable,

(c) within approximately 50 metres if the boundary of a national park or nature reserve.

2. With the  $LA1(1\text{ minute})$  noise limits in condition L5.1 and L5.2, the noise monitoring equipment must be located within 1 metre of a dwelling facade.

3. With the noise limits in condition L5.1 and condition L5.2, the noise monitoring equipment must be located;

(a) at the most affected point at a location where there is no dwelling at the location, or

(b) at the most affected point within an area at a location prescribed by conditions L5.7 1(a) or L5.7 1(b).

L5.8 A non-compliance of condition L5.1 or condition L5.2 will still occur where noise generated from the premises in excess of the appropriate limit is measured;

a) at a location other than an area prescribed by conditions L5.7 1(a) and L5.7 1(b), and /or

b) at a point other than the most affected point at a location.

L5.9 For the purposes of determining the noise generated at the premises all applicable modification factors as described in the NSW EPA Noise Policy for Industry 2017 must be applied, as appropriate, to the noise levels measured by the noise monitoring equipment.

# Environment Protection Licence

Licence - 1770

- M3.2 Subject to any express provision to the contrary in this licence, monitoring for the concentration of a pollutant discharged to waters or applied to a utilisation area must be done in accordance with the Approved Methods Publication unless another method has been approved by the EPA in writing before any tests are conducted.

## M4 Environmental monitoring

### Requirement to monitor noise

- M4.1 To determine compliance with condition L5.1, attended noise monitoring must be undertaken in accordance with conditions L5.7 and L5.8, and
- (a) at each one of the locations listed in condition L5.1;
  - (b) occur quarterly within the reporting period of the Environment Protection Licence with at least 2 months between monitoring periods;
  - (c) occur during each day, evening and night period as defined in the NSW Industrial Noise Policy (EPA 2000) for a minimum of 15 minutes for three of the quarters;
  - (d) the night time 15 minute attended monitoring in accordance with c) must be undertaken between the hours of 1am and 4am;
  - (e) the night time LA1 (1 min) attended monitoring in accordance with c) must be undertaken between the hours of 1am and 4am;
  - (f) one quarterly monitoring must occur during each day, evening and night period as defined in the NSW EPA Noise Policy for Industry 2017 for a minimum of 1.5 hours during the day; 30 minutes during the evening; and 1 hour during the night, and
  - (g) each quarterly monitoring must be undertaken on a different day(s) of the week not including Saturdays, Sundays and public holidays; and
  - (h) these monitoring conditions take effect in the 2015 Reporting period.

Note: The intention of this condition is that quarterly monitoring be undertaken at each sensitive receiver. That at each sensitive receiver monitoring is undertaken over a range of different days excluding weekends and public holidays during the reporting period so as to be representative of operating hours. That night time 15 minute attended monitoring and the LA1 (1min) monitoring for three of the quarters be undertaken at worst case being the most stable atmospheric conditions and when noise would be most intrusive to sleep. All of the sensitive receivers do not have to be monitored on the same day, evening and night for sub condition f.

- M4.2 For the Annual Reporting Period ending March 2015 the EPA will accept all monitoring required by the current Department of Planning and Environment consent (usually quarterly monitoring for noise as dB(A) Leq15minutes) for compliance with noise monitoring requirements in this licence, as a single report attached to the Annual Return for the premises.

## M5 Weather monitoring

- M5.1 At the point(s) identified below, the licensee must monitor (by sampling and obtaining results by analysis) the parameters specified in Column 1 of the table below, using the corresponding sampling method, units of measure, averaging period and sampling frequency, specified opposite in the Columns 2, 3, 4 and 5 respectively.



## B.3 Noise management plan

## 2.4 Chain Valley Colliery Environmental Protection License 1770

CVC operates under EPL 1770 issued by the NSW EPA under the POEO Act. The EPL has been modified, most recently on 2 April 2019 acknowledging the transfer of ownership from LakeCoal Pty Ltd to Great Southern Energy Pty Ltd.

Noise related requirements of EPL 1770 together with where they are addressed in this NMP are provided in **Appendix E**.

## 2.5 Manning Colliery Environmental Protection License 191

Manning Colliery operates under EPL 191 issued by the NSW EPA under the POEO Act. The EPL has been modified, most recently on 1 April 2019 following the statutory five-year review and consisting of a number of variations which were mostly administrative in nature.

Condition L5 of EPL 191 notes that noise limits are not specified, with the Department of Planning, Industry and Environment being the appropriate authority for regulating noise conditions under Project Approval 06\_0311.

## 2.6 Operational Noise Criteria

Noise limits within CVC Development Consent SSD-5465 and MC Project Approval 06\_0311 have been outlined in **Table 2**.

Review Date	Next Review Date	Revision No	Document Owner	Page
20/04/2022	20/04/2025	1	Environmental Compliance Coordinator	Page 12 of 89

**DOCUMENT UNCONTROLLED WHEN PRINTED**

**Table 2: Consented Operational Noise Criteria dB(A) for Delta Coal Collieries**

Consent/Approval/EPL Location	Day		Evening		Night		
	L <sub>Aeq</sub> (15 min)		L <sub>Aeq</sub> (15 min)		L <sub>Aeq</sub> (15 min)		L <sub>A1</sub> (1 min)
<b>Chain Valley Colliery</b>							
R8 (EPL Point 8)	38		38		38		45
R11 (EPL Point 11)	49	41 <sup>^</sup>	49	41 <sup>^</sup>	49	41 <sup>^</sup>	54
R12 (EPL Point 12)	49	41 <sup>^</sup>	49	41 <sup>^</sup>	49	41 <sup>^</sup>	53
R13 (EPL Point 13)	43	41 <sup>^</sup>	43	41 <sup>^</sup>	43	41 <sup>^</sup>	49
R15 (EPL Point 15)	36		36		36		45
R19 (EPL Point 19)	37		37		37		45
R22 (EPL Point 22)	46	40 <sup>^</sup>	46	40 <sup>^</sup>	46	40 <sup>^</sup>	46
All other privately-owned land	35		35		35		45
<b>Manning Colliery</b>							
4 – di Rocco	40		36		36		46
5 – Keighran	40		39		39		49
6 – Swan	40		37		37		47
7 – Druitt	40		35		35		45
8 – Macquarie Shores Home Village	42		42		42		47
9 – Jeans	40		37		37		47
11 – Jeans	40		36		36		46
18 – Jeans	40		36		36		46
20 – Knight and all other privately-owned residences	40		36		36		46

<sup>^</sup> = Long Term Noise Goals (where long-term goals differ from consented criteria)

Noise criteria outlined in **Table 2** do not apply if Delta Coal has an agreement with the owner/s of the relevant residence or land to exceed the noise criteria and Delta Coal has advised the EPA and DPIE in writing of the terms of this agreement.

As CVC has been operating for approximately 58 years, some of the predicted noise impacts at local receivers are greater than would usually be permissible without the requirement to offer noise treatments or voluntary acquisition. Notably the relocation of coal handling from CVC to MC in 2017 significantly improved CVC progression toward realising the long-term goals at receivers R11 to R13, where currently monitoring typically notes that occasional forklift and plant start-up warnings can be heard during monitoring at these receivers, while typically the site is inaudible. Consistent with noise monitoring results, community complaints from residents at these receivers regarding noise emissions has significantly decreased.

Review Date	Next Review Date	Revision No	Document Owner	Page
20/04/2022	20/04/2025	1	Environmental Compliance Coordinator	Page 13 of 89

**DOCUMENT UNCONTROLLED WHEN PRINTED**

#### 4.2.2 Chain Valley Colliery

Consistent with the noise impact assessment prepared by AECOM Pty Ltd for CVC in 2011 and undertaken as part of the Environmental Impact Statement (EIS) for Development Consent of SSD-5465, residential receivers have been divided into seven (7) noise catchment areas with similar geographical and acoustic features. The following points are considered representative of each noise catchment area:

- ATN001, representative of EPL 1770 monitoring point identification number 9, also identified in Development Consent SSD-5465 as receiver 'R8'. The attended monitoring point captures noise emissions at privately-owned residential properties located in Manning Park, northwest of the Chain Valley Colliery pit top. The dominant noise sources in this area are birds, insects, traffic and other industrial sources;
- ATN002, representative of EPL 1770 monitoring point identification number 12, also identified in Development Consent SSD-5465 as receiver 'R11'. The attended monitoring point captures noise emissions at privately-owned residential properties located in Kingfisher Shores, south-east of the Chain Valley Colliery pit top. The dominant noise sources in this area are birds, insects, traffic and other industrial sources;
- ATN003, representative of EPL 1770 monitoring point identification number 16, also identified in Development Consent SSD-5465 as receiver 'R15'. The attended monitoring point captures noise emissions at privately-owned relocatable residences within MSHV, south of the Chain Valley Colliery pit top. The dominant noise sources in this receiver area are birds, insects, traffic and other industrial sources. Activities at Manning Colliery are also audible at times;
- ATN004, representative of Development Consent SSD-5465 receiver 'R14'. The attended monitoring point captures noise emissions at privately-owned residential properties located in Chain Valley Bay South, south-east of the Chain Valley Colliery pit top. The dominant noise sources in this area are birds, insects, traffic and other industrial sources;
- ATN005, representative of Development Consent SSD-5465 receiver 'R17'. The attended monitoring point captured noise emissions at privately-owned residential properties located in Chain Valley Bay East, south-east of the Chain Valley Colliery pit top. The dominant noise sources in this area are birds, insects, traffic and other industrial sources;
- ATN006, representative of EPL 1770 monitoring point identification number 20, also identified in Development Consent SSD-5465 as receiver 'R19'. The attended monitoring point captures noise emissions at privately-owned residential properties located in Chain Valley Bay North, east of the Chain Valley Colliery pit top. The dominant noise sources in this area are birds, insects, traffic and other industrial sources
- ATN007, representative of EPL 1770 monitoring point identification number 23, also identified in Development Consent SSD-5465 as receiver 'R22'. The attended monitoring point captured

Review Date	Next Review Date	Revision No	Document Owner	Page
20/04/2022	20/04/2025	1	Environmental Compliance Coordinator	Page 26 of 89

**DOCUMENT UNCONTROLLED WHEN PRINTED**

noise emissions at privately-owned residential properties located in Summerland Point, surrounding Chain Valley Colliery’s Summerland Point ventilation shaft and fan site. The dominant noise sources in this area are birds, insects, traffic and the Summerland Point ventilation shaft and fan site.

It is noted that, with reference to the requirements of the EPL, two receivers were not considered to be captured by the seven (7) noise catchment areas outlined in the EIS and as such, monitoring is to be undertaken at the following points in addition to locations ATN001 to ATN007:

- R12, identified in EPL 1770 as noise monitoring point 13, noted to be adjacent to ATN002 at Kingfisher Shores on Lakeshore Avenue, Kingfisher Shores; and
- R13, identified in EPL 1770 as noise monitoring point 14, located on Karoola Avenue, Kingfisher Shores.

The spatial locations of the CVC attended monitoring locations and relevant noise criteria are detailed in **Table 5** below.

**Table 5: Noise Monitoring Locations and Limits for Chain Valley Colliery**

Location	Receivers Represented	Coordinates	Day	Evening	Night	Night
	EPL 1770 ID SSD-5465 ID		<i>L<sub>Aeq(15 min)</sub></i> dB (A)	<i>L<sub>Aeq(15 min)</sub></i> dB (A)	<i>L<sub>Aeq(15 min)</sub></i> dB (A)	<i>L<sub>A1(1 min)</sub></i> dB (A)
ATN001	EPL #9	364140 E	35	35	35	35
	R8	6330594 N				
ATN002	EPL #12	365218 E	49	49	49	54
	R11	6329388 N				
ATN003	EPL#16	365165 E	36	36	36	45
	R15	6328323 N				
ATN004	N/A	365949 N	35	35	35	45
	R14	6328530 E				
ATN005	N/A	366560 N	35	35	35	45
	R17	6328590 E				
ATN006	20	366305 N	37	37	37	45
	R19	6329321 E				
ATN007	23	366425 N	46	46	46	46
	R22	6331135 E				
R12	13	365185 N	49	49	49	53
	R12	6329352 E				
R13	14	365391 N	43	43	43	49
	R13	6329169 E				

Review Date	Next Review Date	Revision No	Document Owner	Page
20/04/2022	20/04/2025	1	Environmental Compliance Coordinator	Page 27 of 89

**DOCUMENT UNCONTROLLED WHEN PRINTED**

---

# Appendix C

Calibration certificates

---

# CERTIFICATE OF CALIBRATION

CERTIFICATE No: **SLM34169**

**EQUIPMENT TESTED:** Sound Level Meter

**Manufacturer:** B & K

**Type No:** 2250

**Mic. Type:** 4189

**Pre-Amp. Type:** ZC0032

**Serial No:** 3029363

**Serial No:** 3260501

**Serial No:** 30109

**Filter Type:** 1/3 Octave

**Test No:** F034175

**Owner:** EMM Consulting  
Suite 01, 20 Chandos St  
St Leonards NSW 2065

**Tests Performed:** IEC 61672-3:2013 & IEC 61260-3:2016

**Comments:** All Test passed for Class 1. (See overleaf for details)

## CONDITIONS OF TEST:

**Ambient Pressure** 1002 hPa  $\pm 1$  hPa

**Temperature** 24  $^{\circ}\text{C} \pm 1^{\circ}\text{C}$

**Relative Humidity** 35 %  $\pm 5\%$

**Date of Receipt :** 02/11/2022

**Date of Calibration :** 03/11/2022

**Date of Issue :** 04/11/2022

**Acu-Vib Test Procedure:** AVP10 (SLM) & AVP06 (Filters)

**CHECKED BY:** *[Signature]*

**AUTHORISED SIGNATURE:** *[Signature]*

*Jack Kielt*

Accredited for compliance with ISO/IEC 17025 - Calibration  
Results of the tests, calibration and/or measurements included in this document are traceable to SI units through reference equipment that has been calibrated by the Australian National Measurement Institute or other NATA accredited laboratories demonstrating traceability.

This report applies only to the item identified in the report and may not be reproduced in part.

The uncertainties quoted are calculated in accordance with the methods of the ISO Guide to the Uncertainty of Measurement and quoted at a coverage factor of 2 with a confidence interval of approximately 95%.



**WORLD RECOGNISED  
ACCREDITATION**

Accredited Lab No. 9262  
Acoustic and Vibration  
Measurements



**Acu-Vib Electronics**  
CALIBRATIONS SALES RENTALS REPAIRS

Head Office & Calibration Laboratory  
Unit 14, 22 Hudson Ave. Castle Hill NSW 2154  
(02) 9680 8133  
www.acu-vib.com.au



# CERTIFICATE OF CALIBRATION

CERTIFICATE No: **C37508**

EQUIPMENT TESTED : Sound Level Calibrator

**Manufacturer:** Svantek  
**Type No:** SV 36      **Serial No:** 79952  
**Class:** 1  
**Owner:** EMM Consulting Pty Ltd  
L3, 175 Scott Street  
Newcastle, NSW 2300

**Tests Performed:** Measured Output Pressure level, Frequency & Distortion  
**Comments:** See Details and Class Tolerance overleaf.

## CONDITION OF TEST:

<b>Ambient Pressure</b>	1005 hPa $\pm 1$ hPa	<b>Date of Receipt :</b>	26/09/2023
<b>Temperature</b>	23 °C $\pm 1$ °C	<b>Date of Calibration :</b>	27/09/2023
<b>Relative Humidity</b>	47 % $\pm 5$ %	<b>Date of Issue :</b>	28/09/2023

**Acu-Vib Test** AVP02 (Calibrators)  
**Procedure:** Test Method: AS IEC 60942 - 2017

**CHECKED BY:** *KB*

**AUTHORISED SIGNATURE:** .....

*Hein Soc*

Accredited for compliance with ISO/IEC 17025 - Calibration

Results of the tests, calibration and/or measurements included in this document are traceable to SI units through reference equipment that has been calibrated by the Australian National Measurement Institute or other NATA accredited laboratories demonstrating traceability.

This report applies only to the item identified in the report and may not be reproduced in part.

The uncertainties quoted are calculated in accordance with the methods of the ISO Guide to the Uncertainty of Measurement and quoted at a coverage factor of 2 with a confidence interval of approximately 95%.



WORLD RECOGNISED  
ACCREDITATION

Accredited Lab No. 9262  
Acoustic and Vibration  
Measurements



**Acu-Vib Electronics**  
CALIBRATIONS SALES RENTALS REPAIRS

Head Office & Calibration Laboratory  
Unit 14, 22 Hudson Ave. Castle Hill NSW 2154  
(02) 9680 8133  
www.acu-vib.com.au

Page 1 of 2    Calibration Certificate  
AVCERT02.1    Rev.2.0    14.04.2021



## **Australia**

### **SYDNEY**

Ground floor 20 Chandos Street  
St Leonards NSW 2065  
T 02 9493 9500

### **NEWCASTLE**

Level 3 175 Scott Street  
Newcastle NSW 2300  
T 02 4907 4800

### **BRISBANE**

Level 1 87 Wickham Terrace  
Spring Hill QLD 4000  
T 07 3648 1200

### **CANBERRA**

Suite 2.04 Level 2  
15 London Circuit  
Canberra City ACT 2601

### **ADELAIDE**

Level 4 74 Pirie Street  
Adelaide SA 5000  
T 08 8232 2253

### **MELBOURNE**

Suite 8.03 Level 8  
454 Collins Street  
Melbourne VIC 3000  
T 03 9993 1900

### **PERTH**

Suite 9.02 Level 9  
109 St Georges Terrace  
Perth WA 6000  
T 08 6430 4800

## **Canada**

### **TORONTO**

2345 Yonge Street Suite 300  
Toronto ON M4P 2E5  
T 647 467 1605

### **VANCOUVER**

60 W 6th Ave  
Vancouver BC V5Y 1K1  
T 604 999 8297



[linkedin.com/company/emm-consulting-pty-limited](https://www.linkedin.com/company/emm-consulting-pty-limited)



[emmconsulting.com.au](http://emmconsulting.com.au)